

CHANGCHUN JIDA SCOLA CO.,LTD

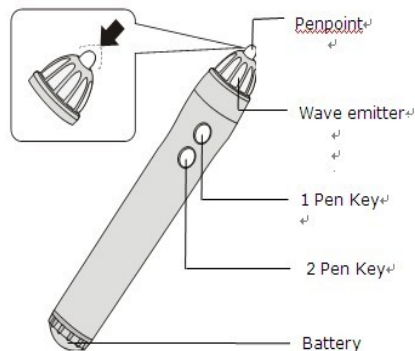


- ✓ Highlights
- ✓ Plug and play
- ✓ Active area up to 100" diagonal
- ✓ No flying spot, no deformation and no time delay
- ✓ Mouse simulation function
- ✓ Multimedia support function
- ✓ Support regular whiteboard, magnetic blackboard, rear projector, glass plane, table top , wall and other surface
- ✓ Wireless is optional
- ✓ Smart weight, only 200g

Portable electronic whiteboard Boyi III

Creat an interactive whiteboard whenever you go

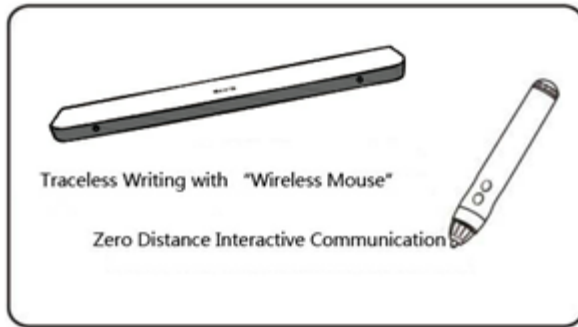
CHANGCHUN JIDA SCOLA CO.,LTD



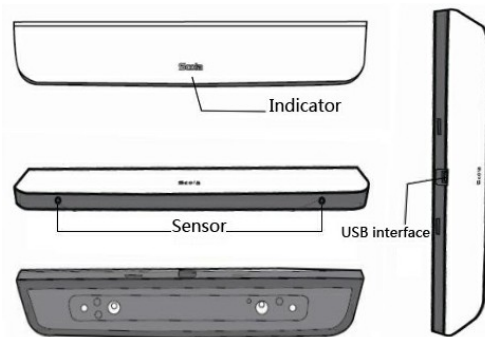
Portable electronic whiteboard Boyi III

- ✓ Boyi III works with any whiteboard connected with a computer and using a projector to display the contents of the computer's screen on the whiteboard, the following main functions can be realized:
- ✓ Multimedia interaction control: including wireless mouse and traceless writing. The writing pen fully replaces the mouse and realizes functions of left and right button, moving and suspending of the mouse. Meanwhile, the writing pen can be used for writing on any screen in a traceless manner, realizing dust-free writing.
- ✓ Stroke-after-stroke replay: content to be written can be reproduced according to practical writing sequence.
- ✓ Support functions of film recording, image capturing tool, clock, angle gauge, triangle, compasses, rectilinear scale, etc.
- ✓ Support functions of pencil, brush pen, combination brush pen (flat-head pen), laser pen, highlight pen, magic pen, creating pen, circling, deleting, etc.
- ✓ Provide abundant teaching resources.
- ✓ Support insertion of objects, such as pictures in various formats, videos, FLASH, standard text, etc.
- ✓ Support the following seven file saving formats: EWB, PPT, PDF, JPG, PNG, TIF and HTML.
- ✓ Support functions of soft keyboard, screen, flashlight, etc.
- ✓ Support optional selections of pen color, line width and writing background.
- ✓ Support page-up and page-down of PPT as well as mark and modification of PPT content.
- ✓ Support standard figure recognition and hand-writing recognition.
- ✓ Provide thumbnail function of written content.

CHANGCHUN JIDA SCOLA CO.,LTD



Traceless Writing with "Wireless Mouse"
Zero Distance Interactive Communication



Portable electronic whiteboard Boyi III

✓ Boyi III Features

- ✓ Pentium® III processor or more advanced one, 400MHz+ processor and 300 MB RAM
- ✓ Windows 2000/XP/7/2003/Vista, Mac
- ✓ Product dimension: 227x43x11mm
- ✓ Product weight: 200g
- ✓ The most effective writing area: 1.2x1.8m
- ✓ System tracking speed: >3m/s
- ✓ System resolution response: 0.1mm
- ✓ Wired and wireless (optional)
- ✓ Working condition: -4°C - 40°C, humidity: 15%-85%
- ✓ Storage and transportation condition: temperature: -40°C - 85°C, humidity: 5%-95%

✓ Package content:

- ✓ Receiver: 1pcs
- ✓ Metal fixed plate: 1pcs
- ✓ Electronic pens: 2pcs
- ✓ Pen point: 5pcs
- ✓ 5m USB cable: 1pcs
- ✓ Disk installation: 1pcs
- ✓ Instruction manual : 1pcs
- ✓ Quality certificate: 1pcs
- ✓ Warranty card: 1pcs
- ✓ Wireless module: optional



CHANGCHUN JIDA SCOLA CO.,LTD

Mount Boyi III

Fixing position of receiver

- ✓ The fixing position of receiver directly affects the normal working of the electronic pen. Please refer to the Diagram of Correct Installation Position in the right column to select the installation position for the receiver.

1. Adjust the projector, make the projected area a normal rectangle. The maximum of the projected area is 1.2x1.8m. please refer the manual of projector and this manual of setting the projector)

2. The distance of the sensor of the receiver and the projected area is 6cm.

3. The receiver is fixed vertically to the middle of the left of the projected area.

✓ Metal fixed Plate

While install Boyi III on the non metal plate, please use our metal fixed plate. At the back of the metal fixed plate, there is a sticker, please remove the protective film, and stick the metal fixed plate on the surface you required, a magnetic is used to connect the receiver and the metal fixed plate.

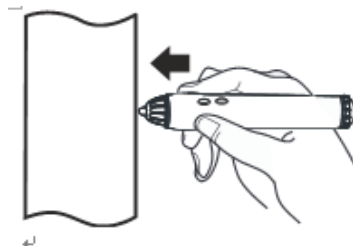
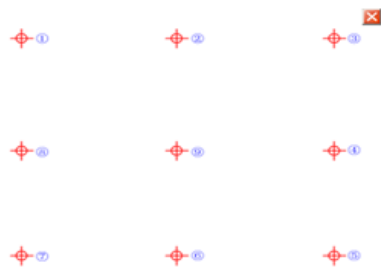
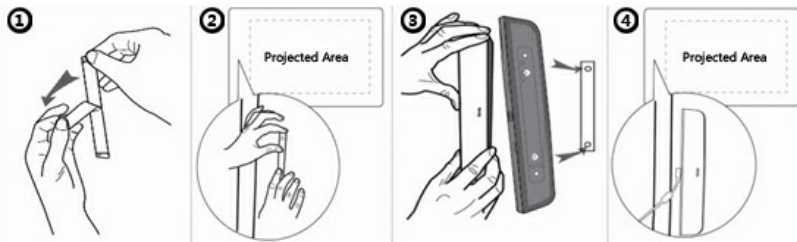
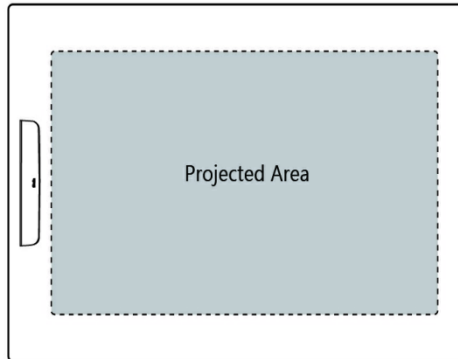
✓ Please refer the left second images;

1. Tear the self-adhesive protective film at the back of the metal fixed plate.

2. Stick vertically the metal fixed plate to the middle of the left projected area.

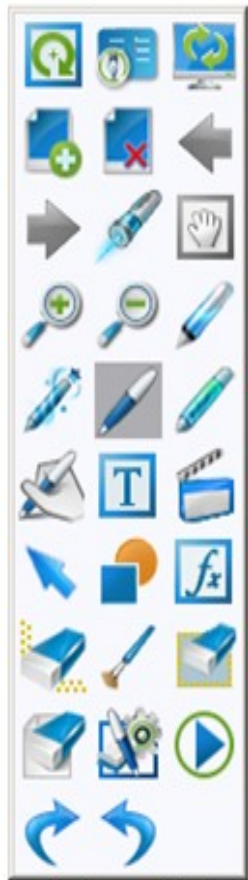
3. Attach the magnet on the metal fixed plate, please note that the positioning holes at the bottom of the receiver, should be installed accordingly with the positioning column of the metal fixed plate.

4. Please check and confirm the installation of Boyi III is firm.

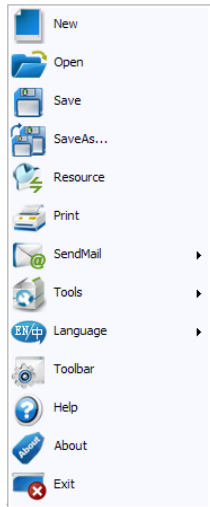


Portable electronic whiteboard Boyi III

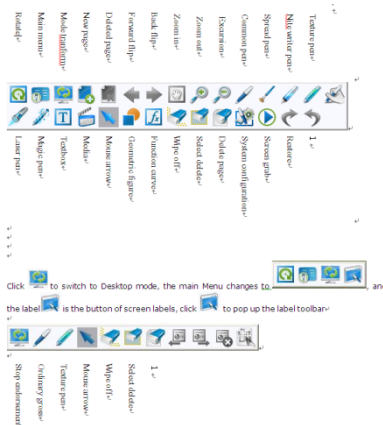
CHANGCHUN JIDA SCOLA CO.,LTD



[Main Toolbar]



Click "Start" on the floating toolbar, and the Start Menu pops up



- ✓ Powerful our Software tool
- ✓ Interface customization
- ✓ Brush pen/ Nite pen/Word pen/Laser pen/Erase Rubber/etc
- ✓ Forward and back pages
- ✓ Zoom in and zoom out/ Rotate
- ✓ Excursion , Layer
- ✓ Copy, cut and paste
- ✓ Lock and unlock
- ✓ Geometric figures
- ✓ Screen grabber, screenshots, clock, keyboard, protractor, divider, ruler, set square, etc
- ✓ Print, sending emails, spotlight, curtain
- ✓ The files can be saved in many formats(ewb, bmp , ppt, HTML, etc)
- ✓ Support video, photo, flash, replay edited moves

Portable electronic whiteboard Boyi III